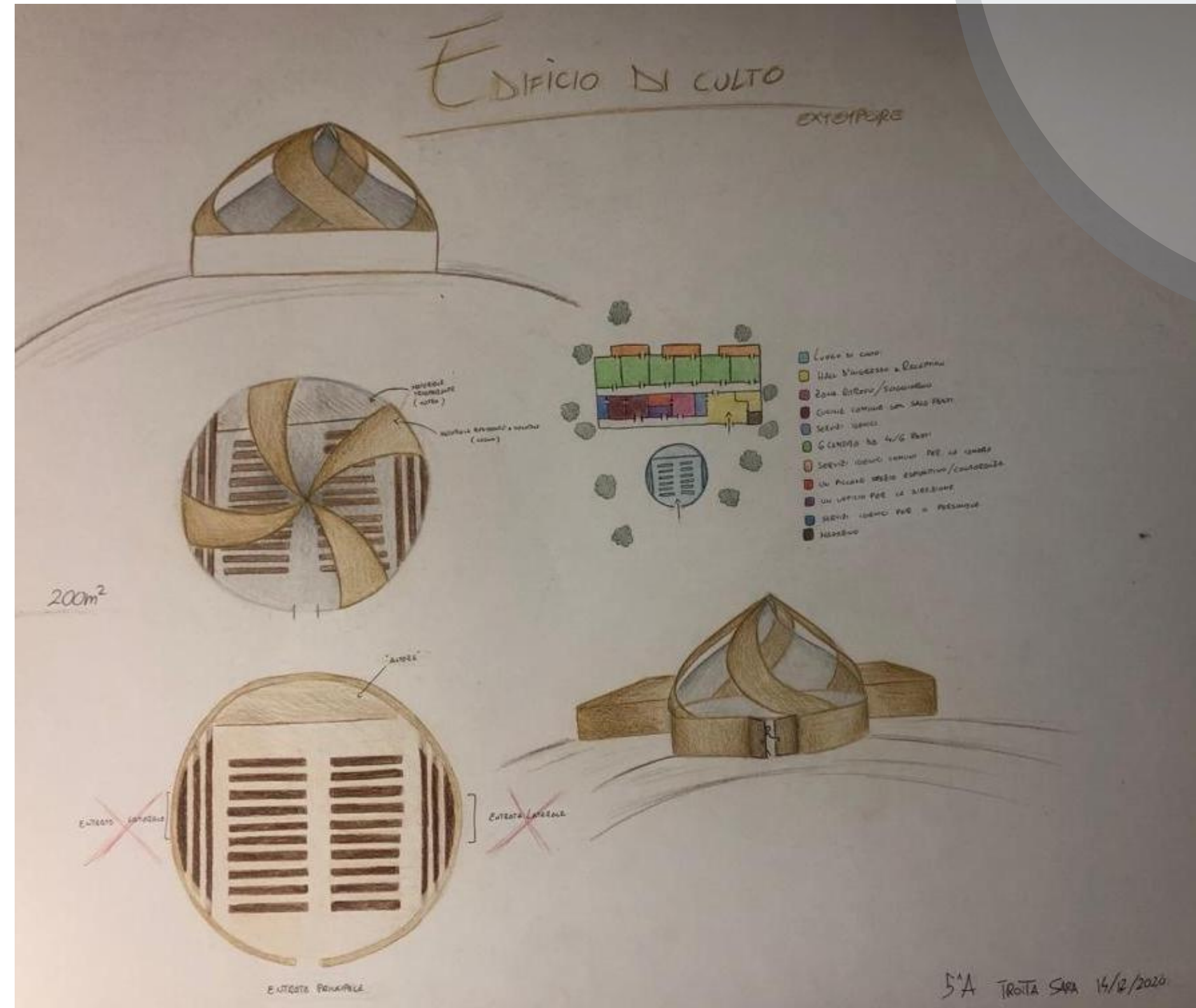


PROGETTO LUOGO DI CULTO

EX TEMPORE

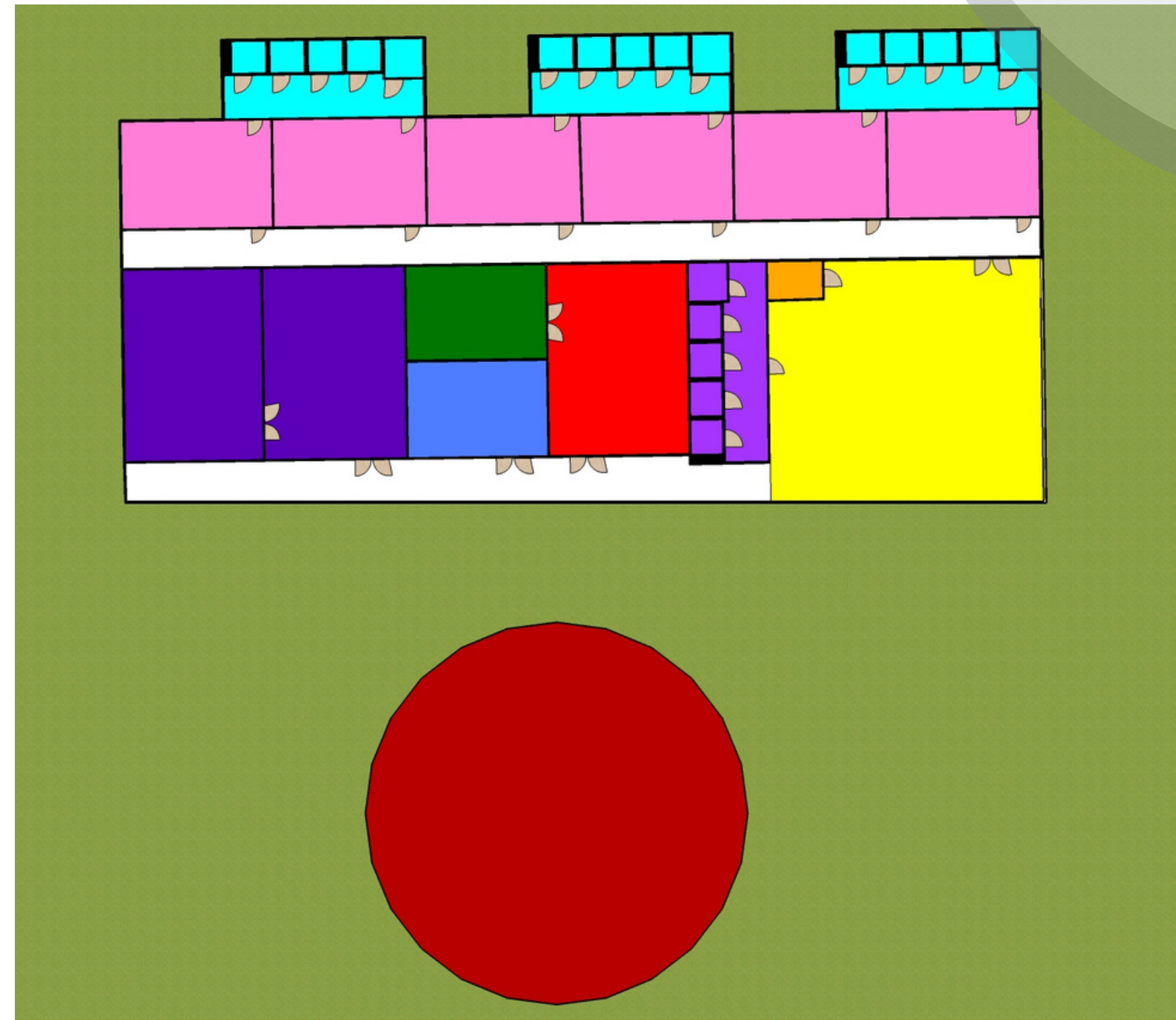
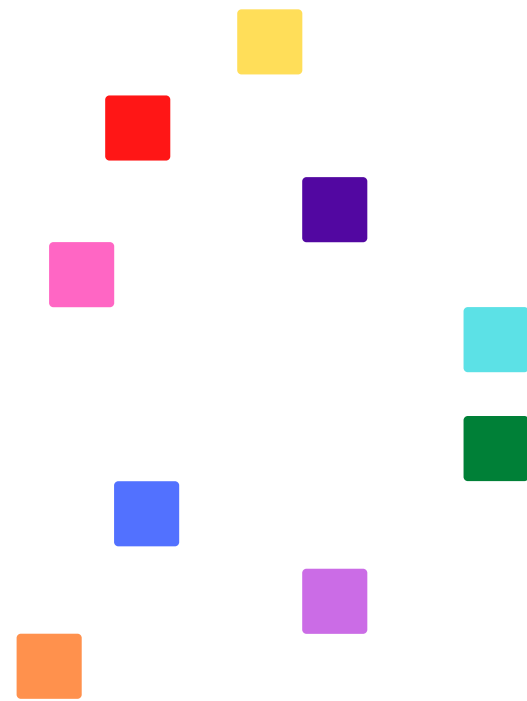
Schema distributivo



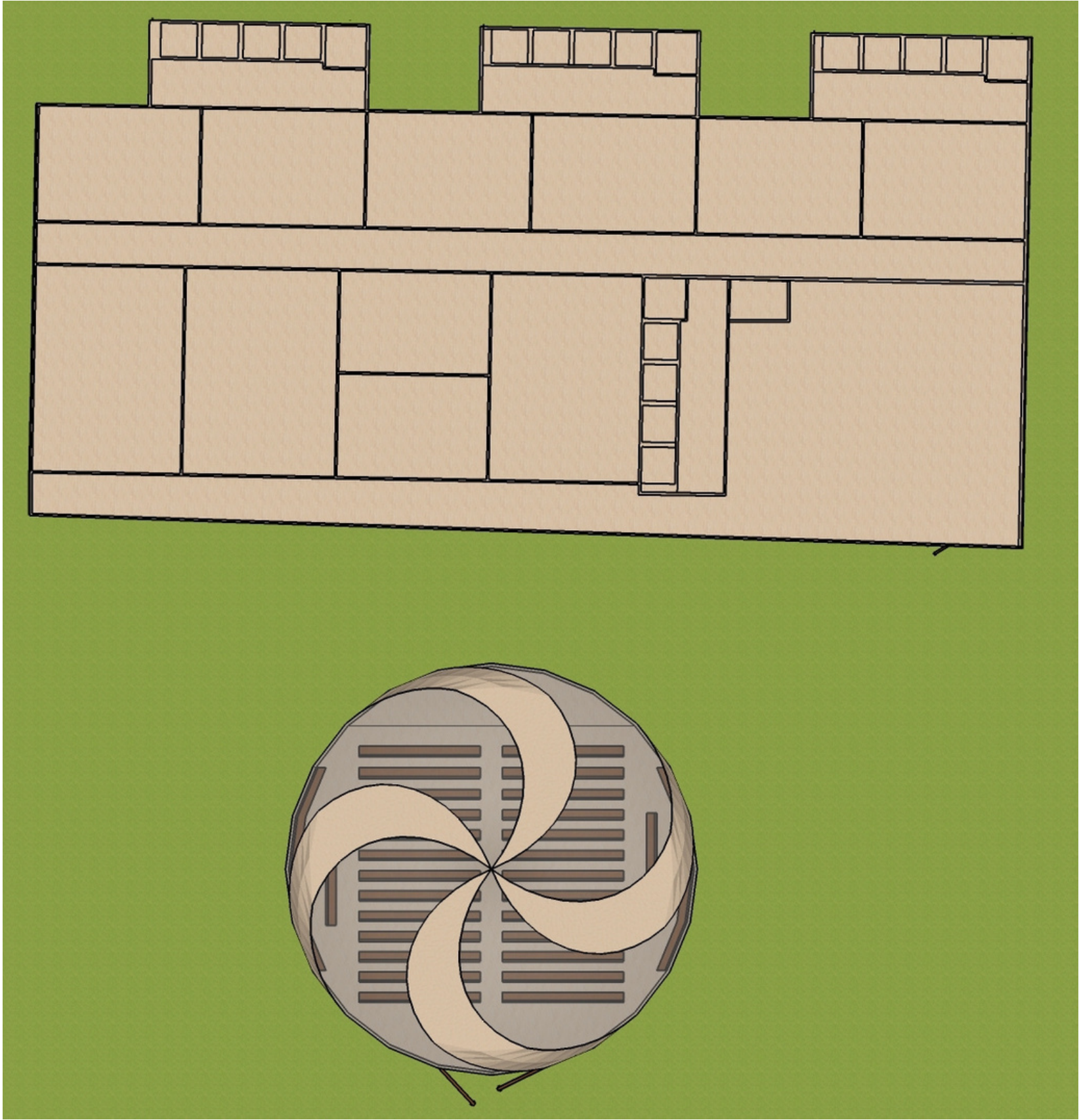
PLANIMETRIA

Schema distributivo

- Hall d'ingresso e reception
- Zona ritrovo/soggiorno
- Cucina comune con sala pasti
- 6 camere da 6 posti
- Servizi igienici comuni per le camere
- Piccolo spazio espositivo/conferenze
- Ufficio per la direzione
- Servizi igienici per il personale
- Piccolo magazzino



PIANTA

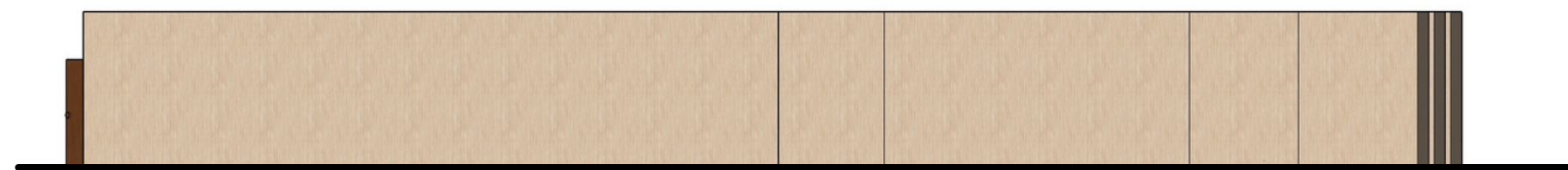
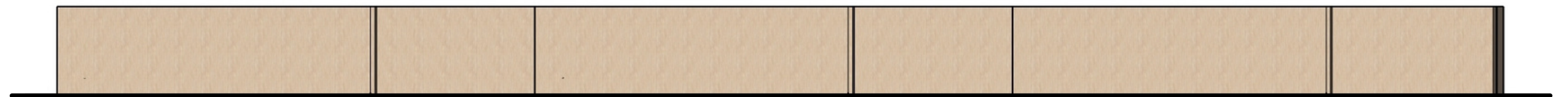


PROSPETTI OSTELLO



Prospetto nord

Prospetto sud

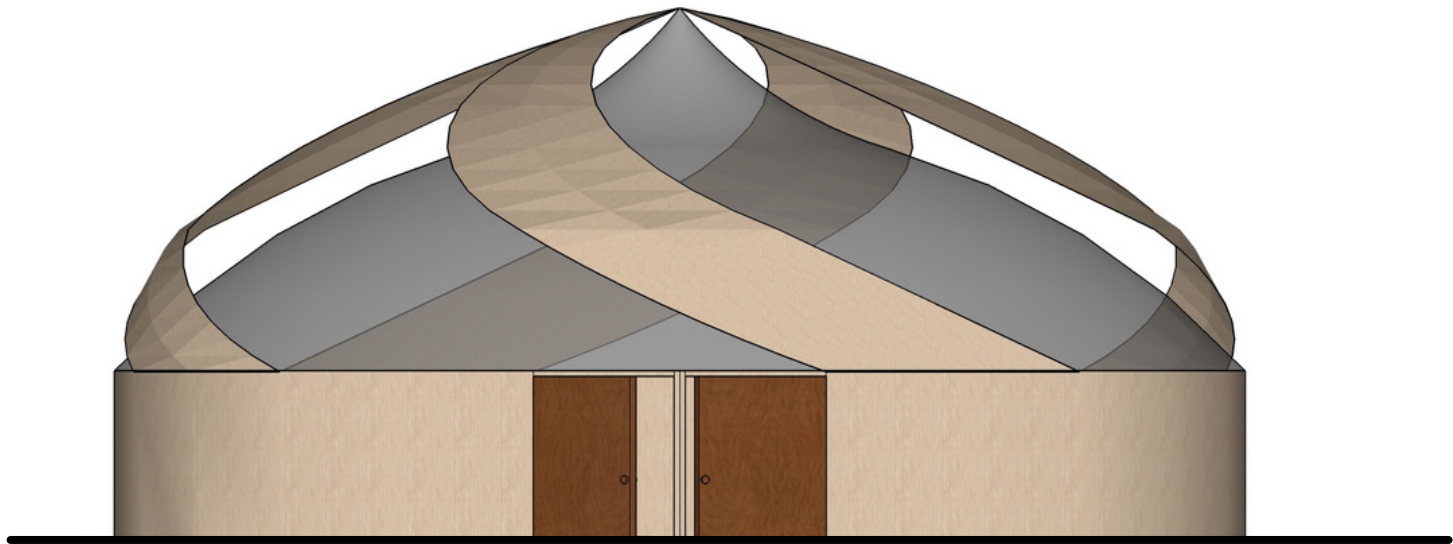


Prospetto ovest

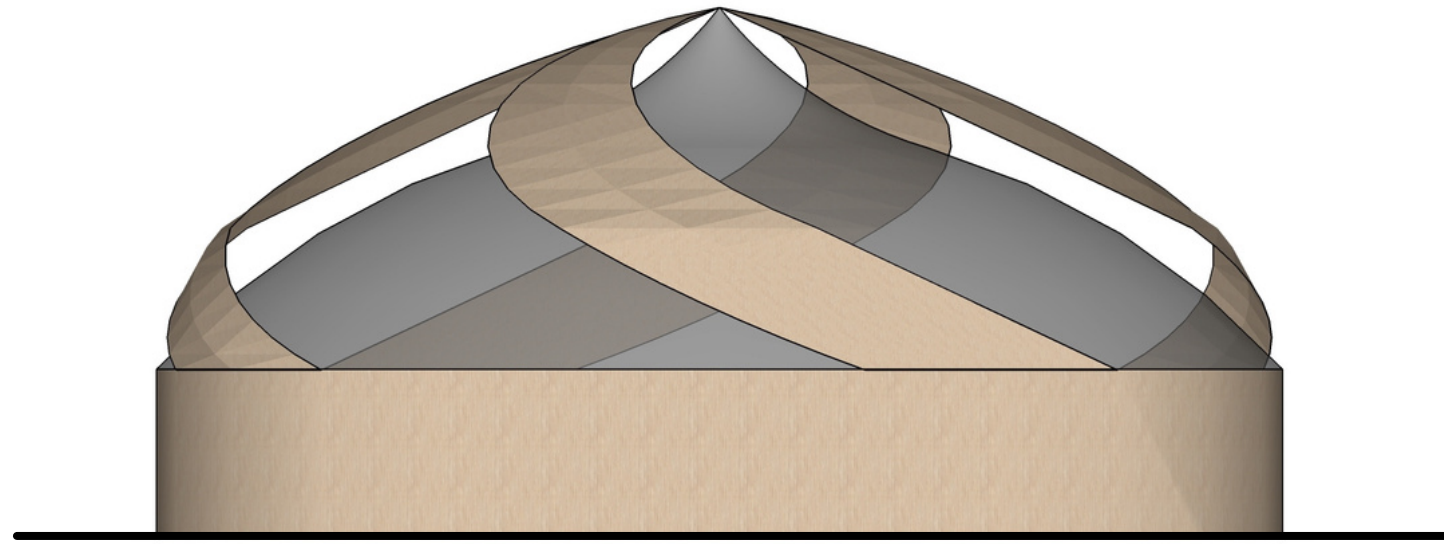
Prospetto est



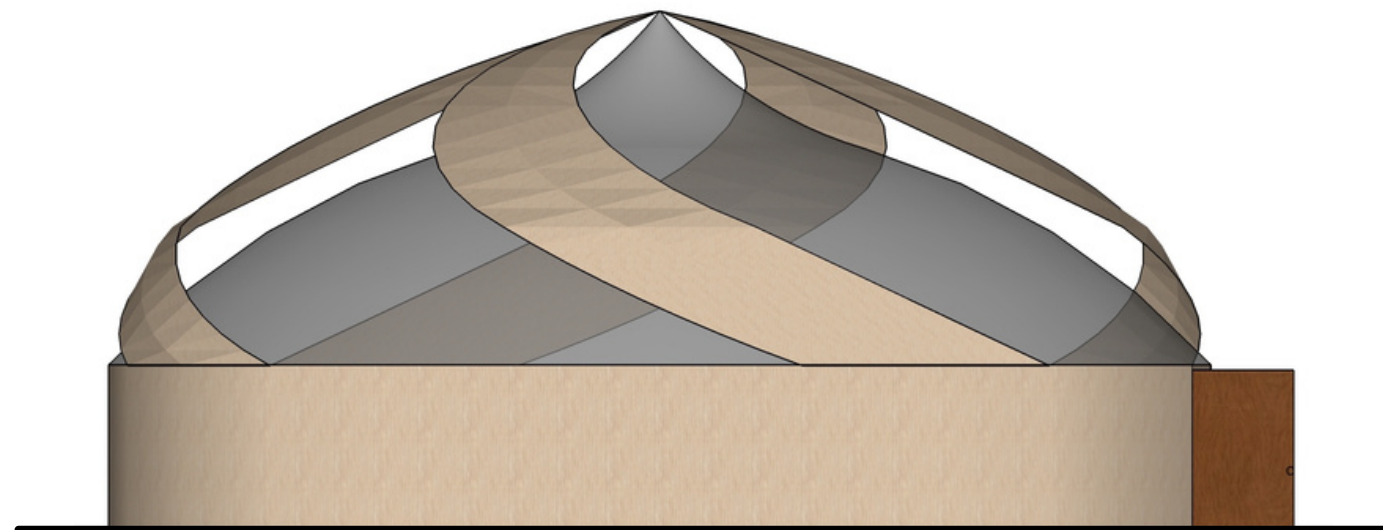
PROSPETTI EDIFICIO DI CULTO



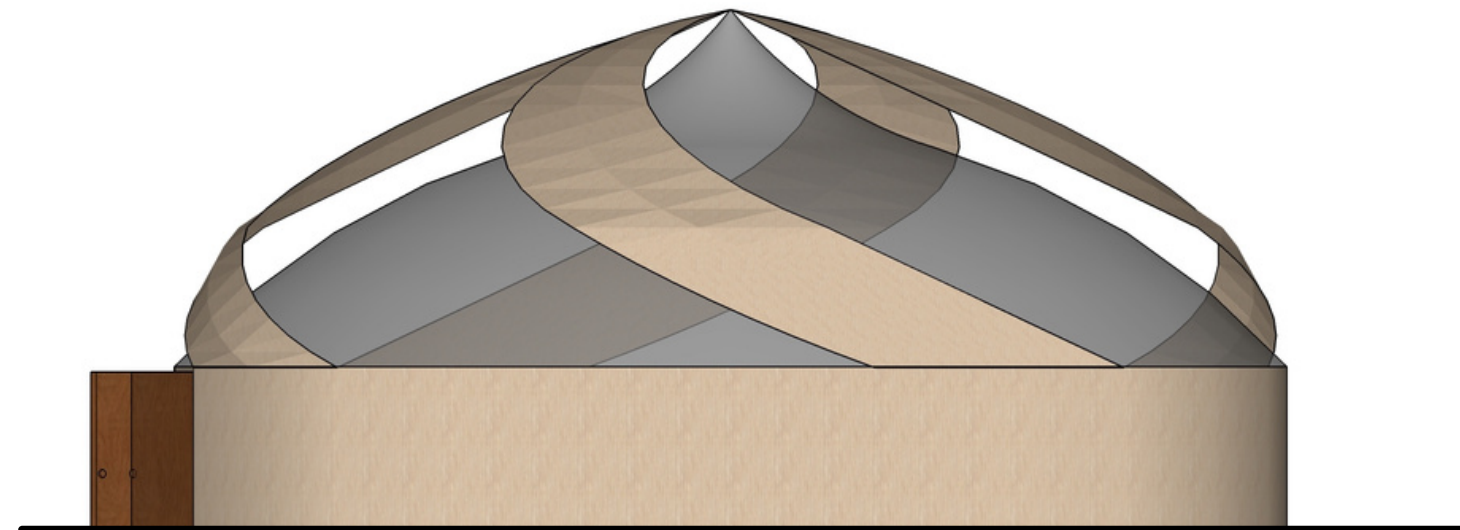
Prospetto nord



Prospetto sud

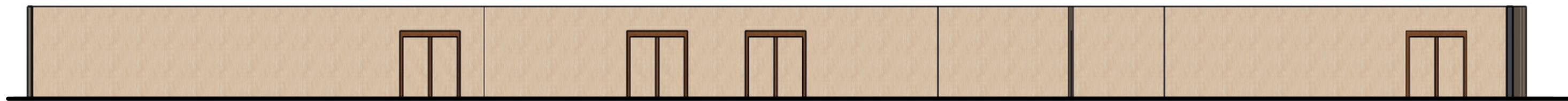


Prospetto ovest



Prospetto est

SEZIONI OSTELLO



Sezione A

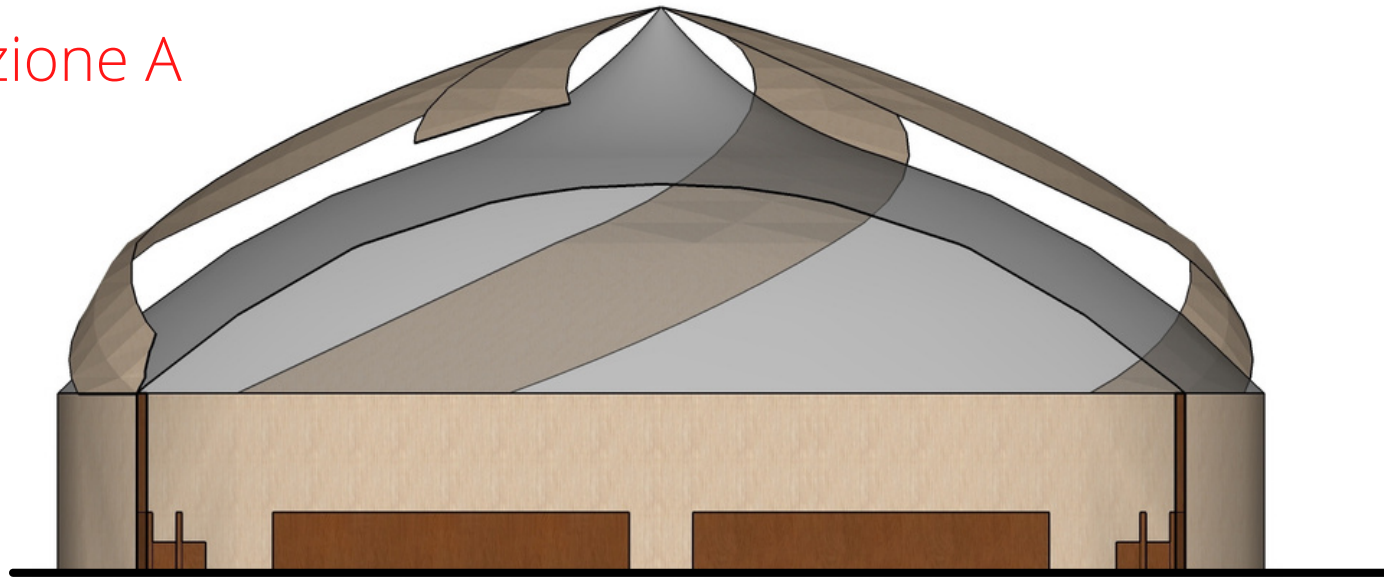


Sezione B

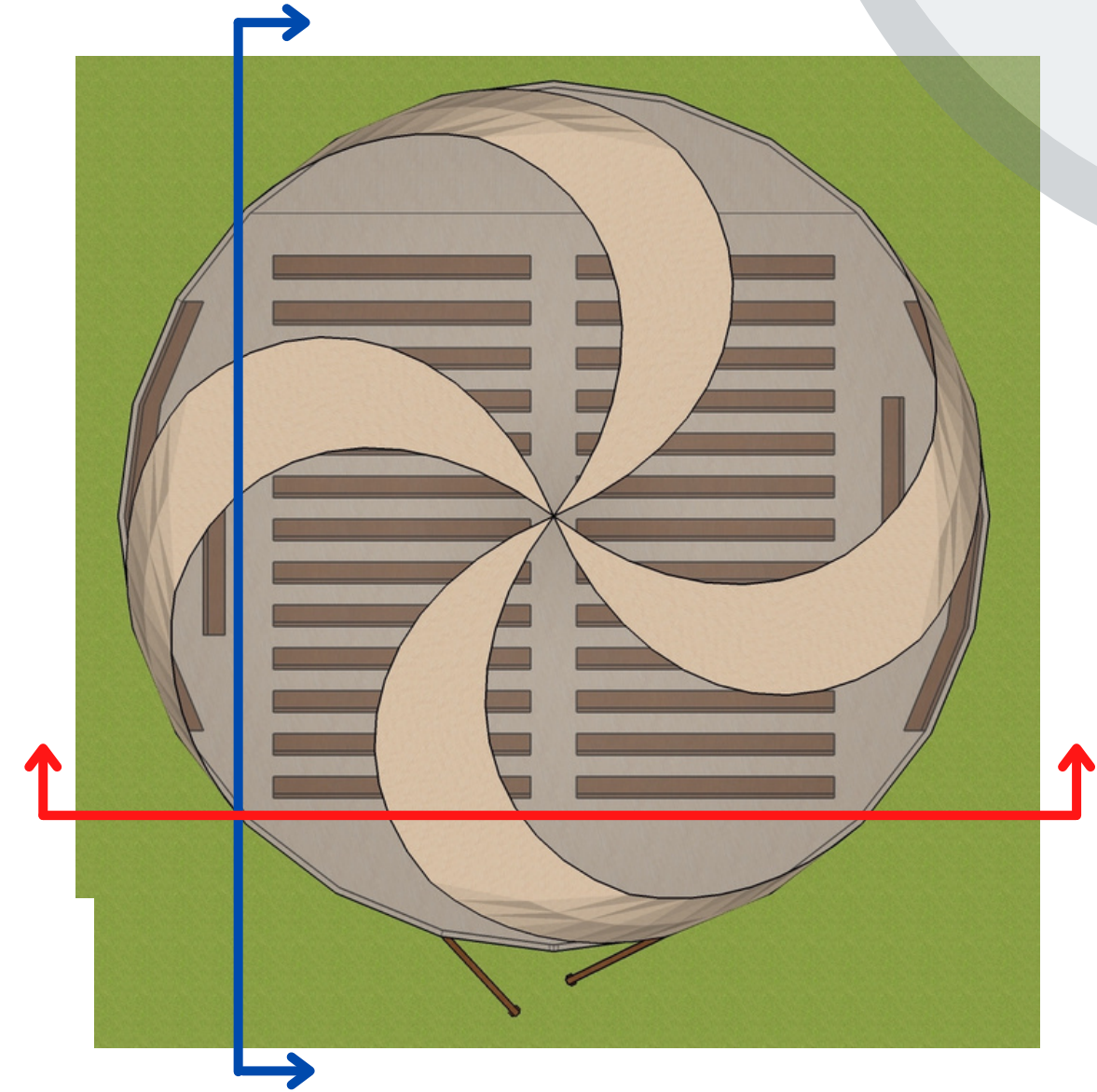
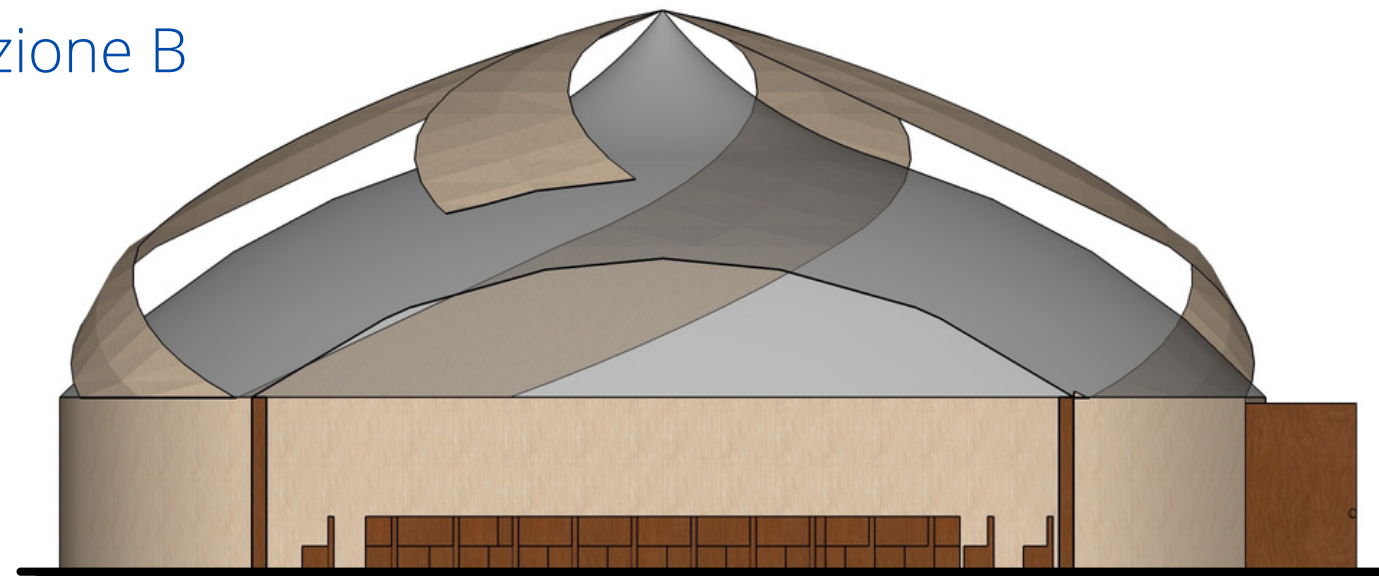


SEZIONI EDIFICIO DI CULTO

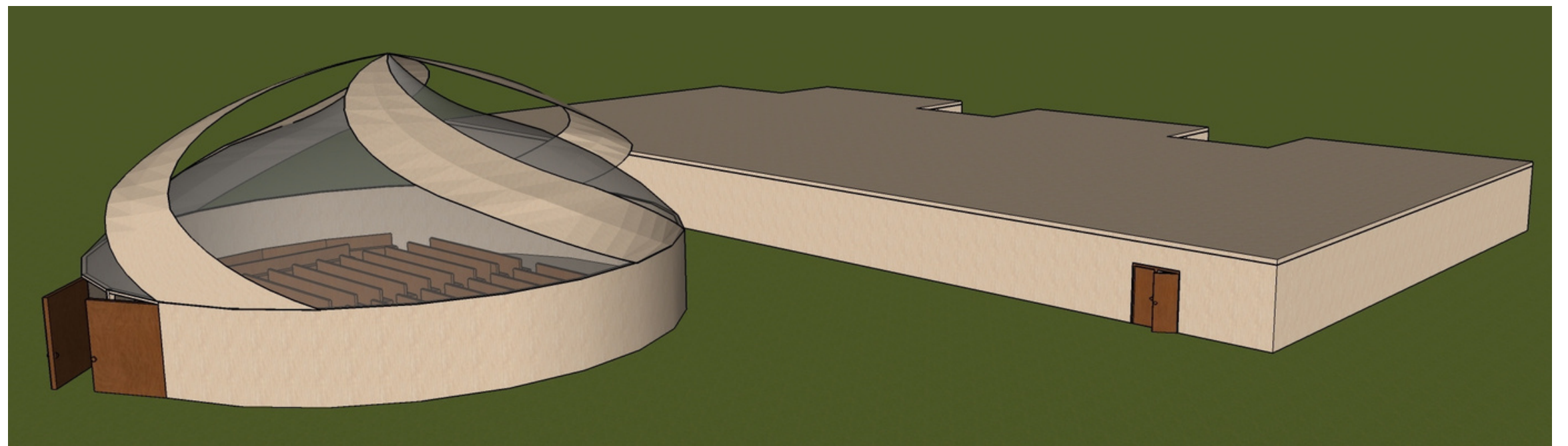
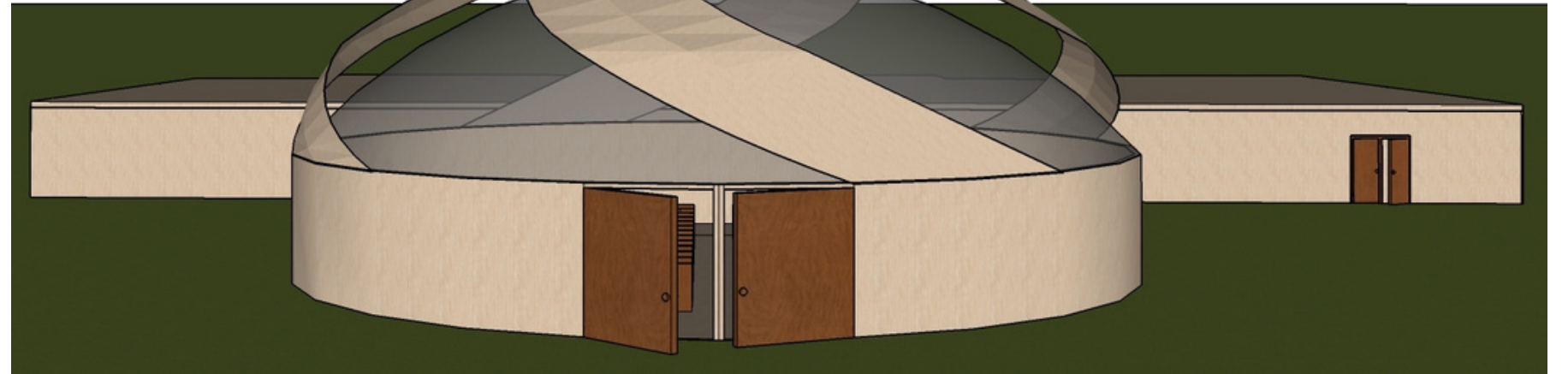
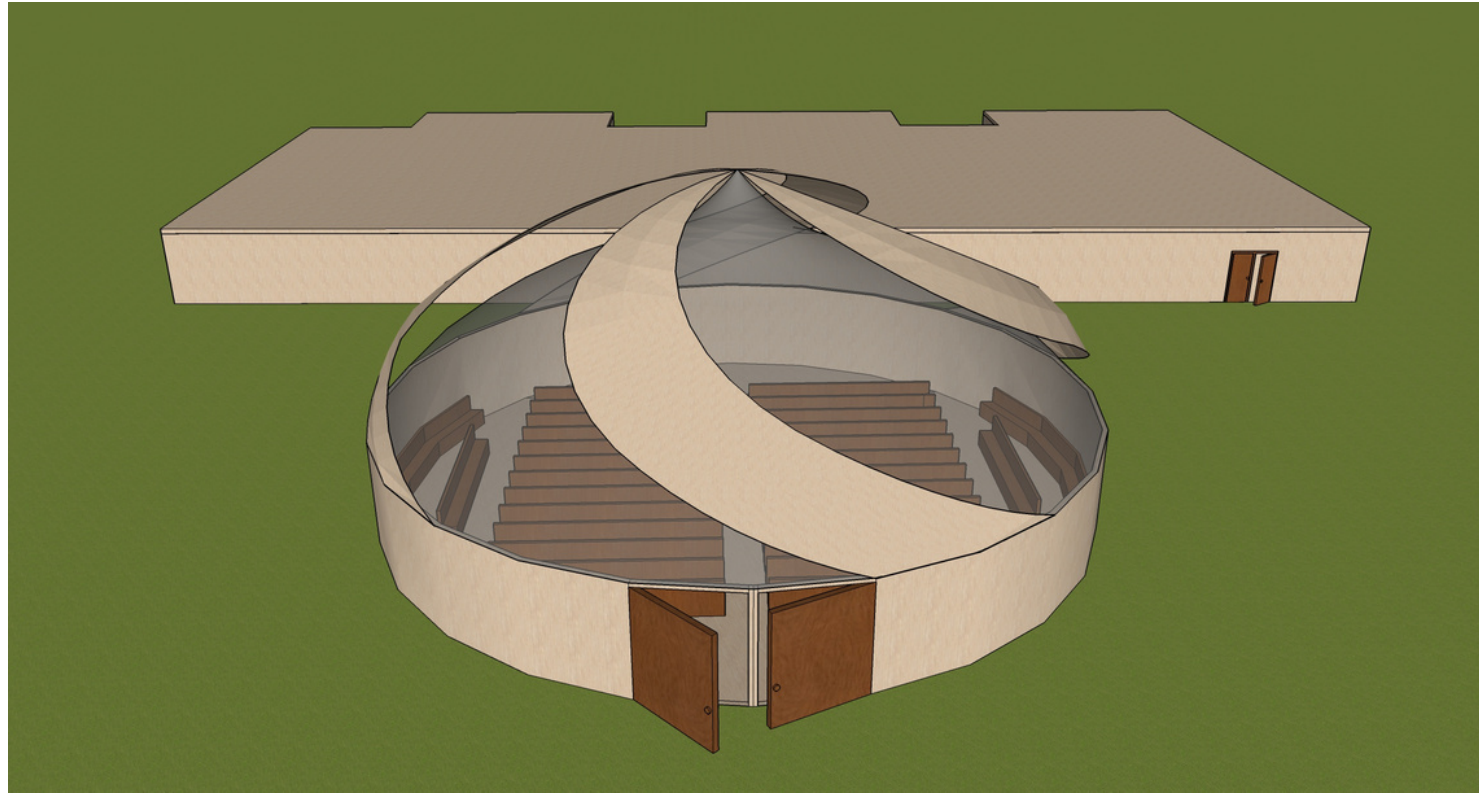
Sezione A



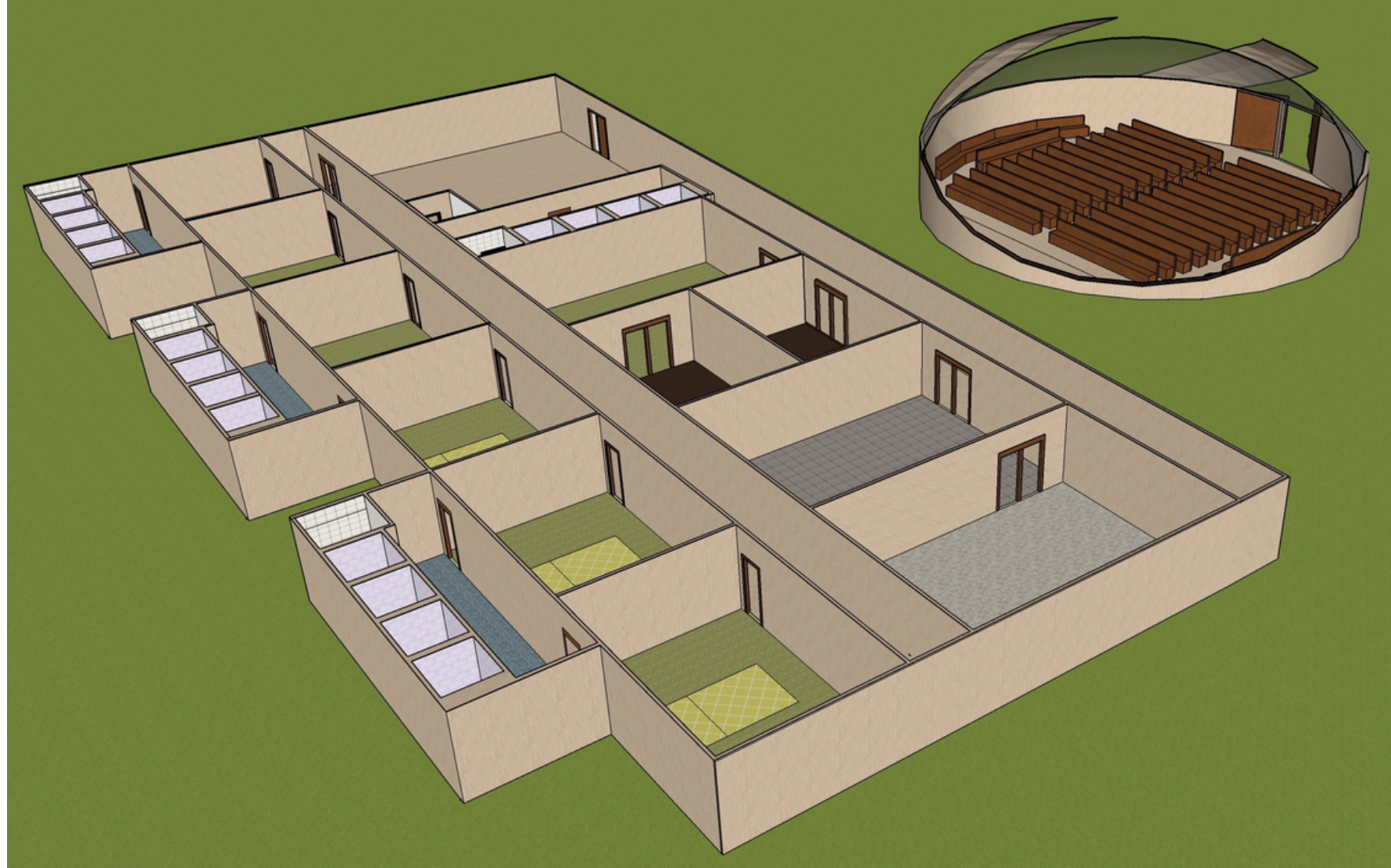
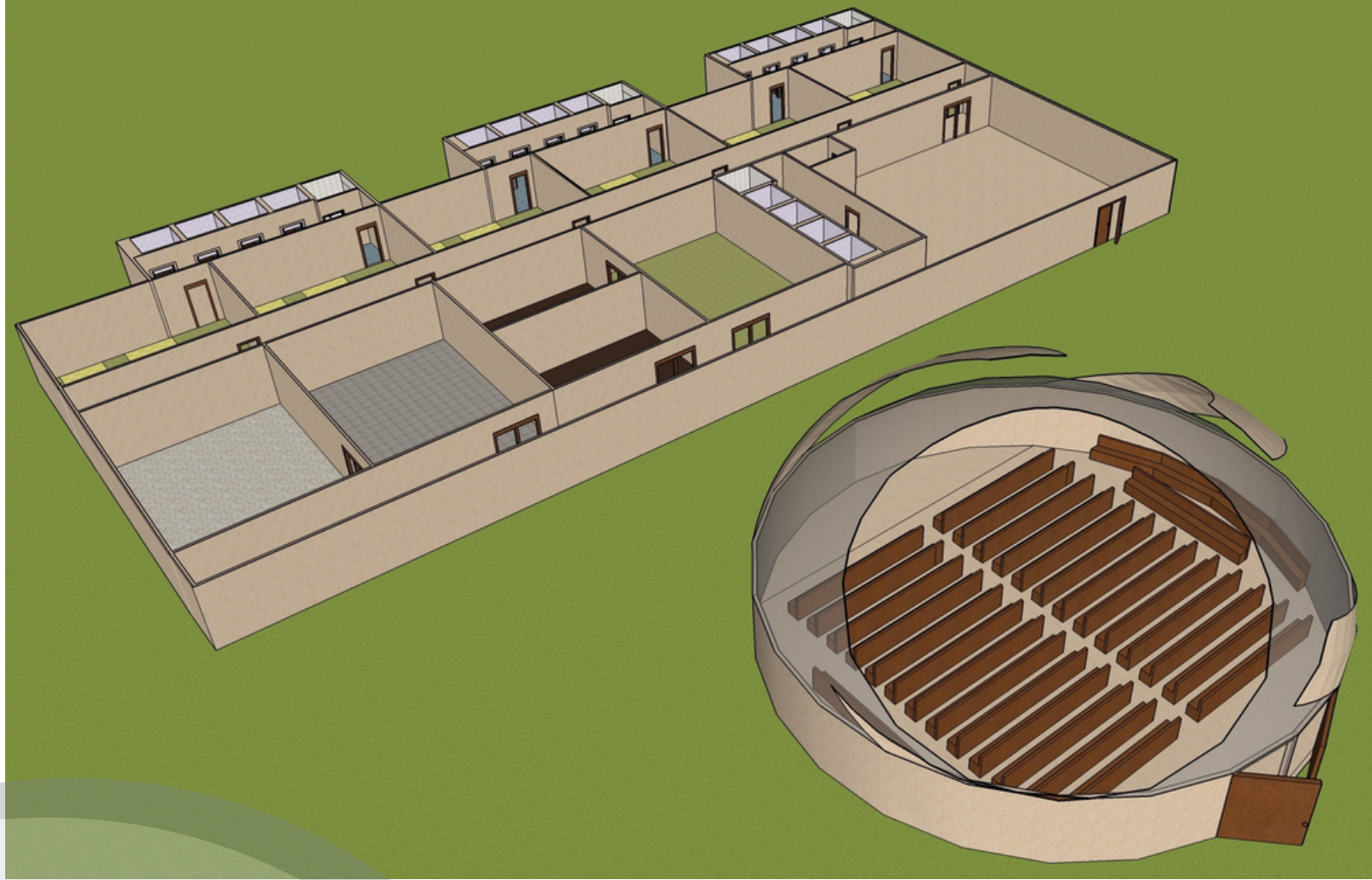
Sezione B



VISTE PROSPETTICHE



SPACCATI PROSPETTICI



DETTAGLIO PROSPETTICO

