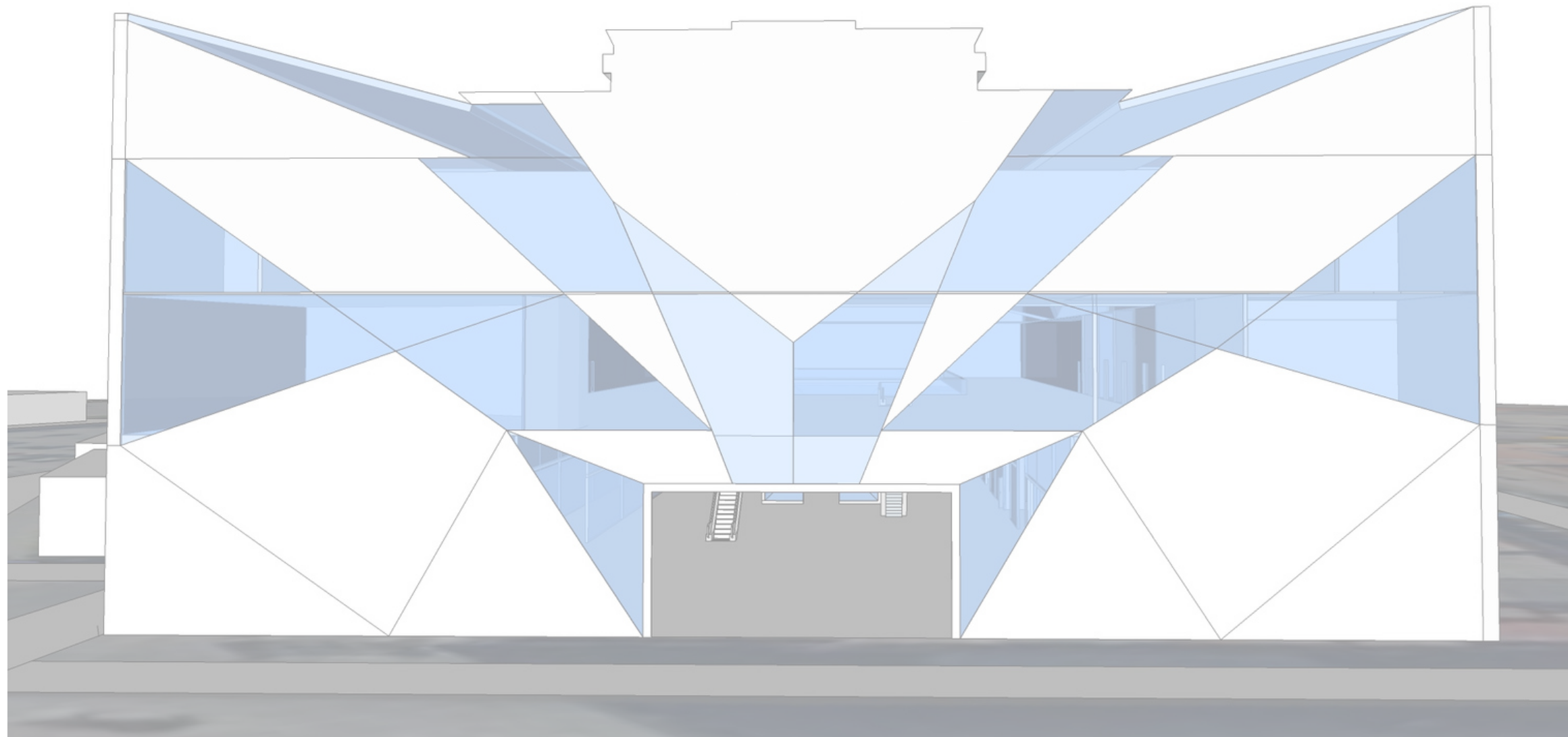


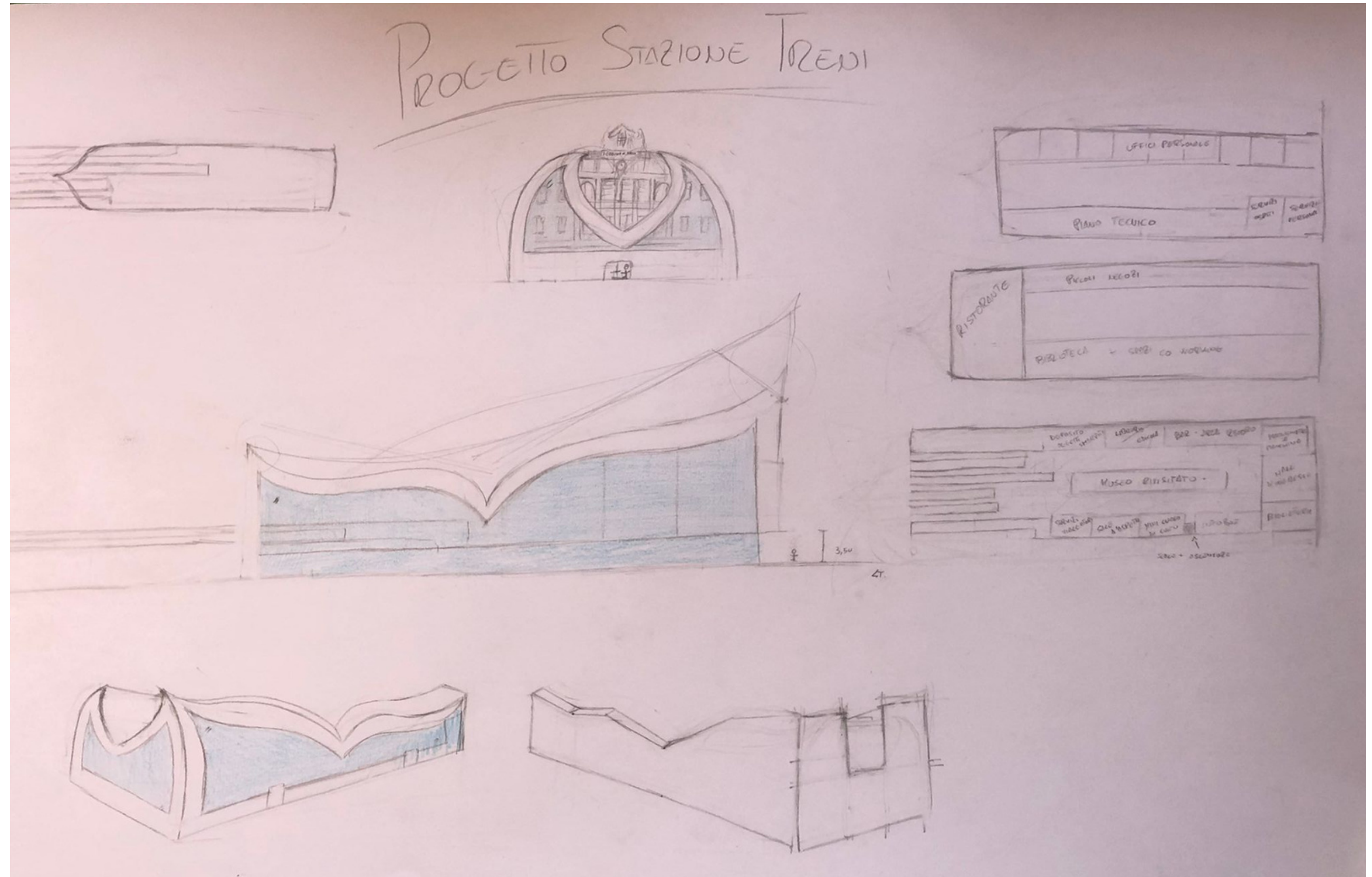
PROGETTO STAZIONE



EX TEMPORE

Elementi spazi richiesti

hall d'ingresso
infopoint
biglietteria
bar - ristoro
sale d'aspetto
libreria/edicola
piccoli negozi
deposito bagagli
deposito oggetti smarriti
uffici per il personale
uffici logistica
servizi per viaggiatori
servizi per il personale/spogliatoi
servizi per gli uffici
zona magazzini



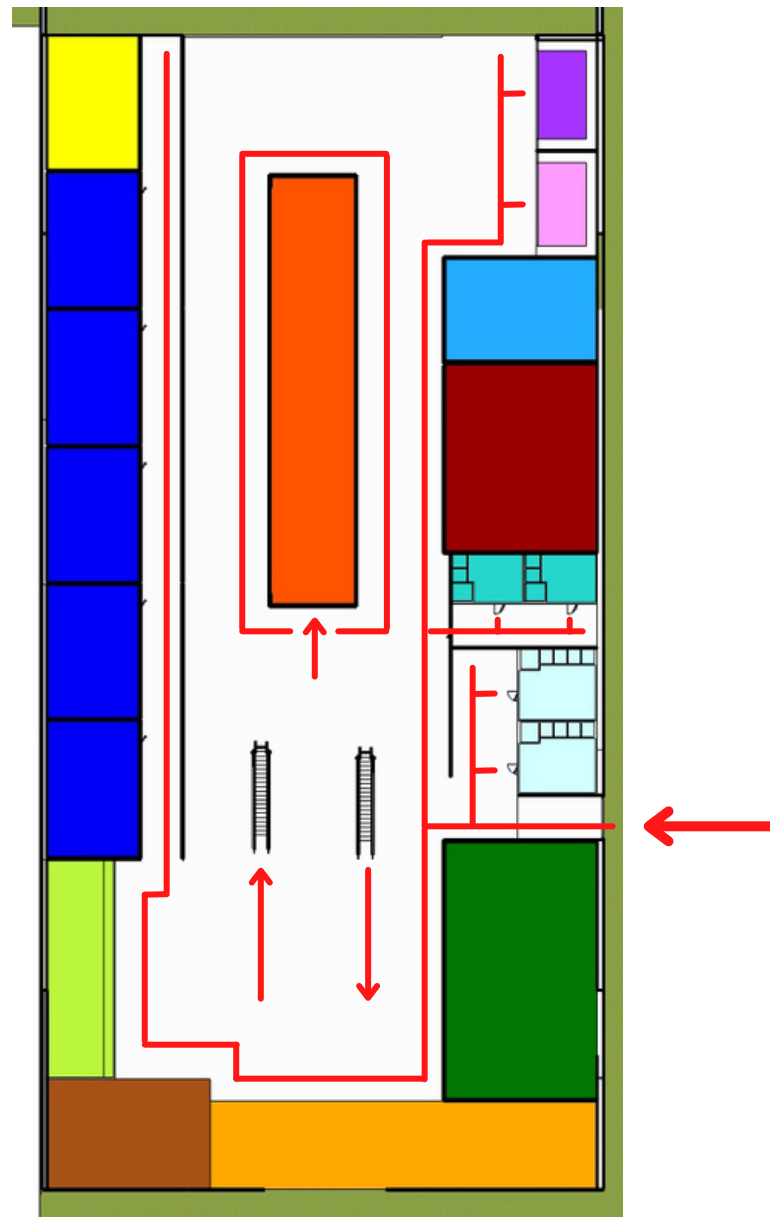
PLANIMETRIA GENERALE



SCHEMI DISTRIBUTIVI

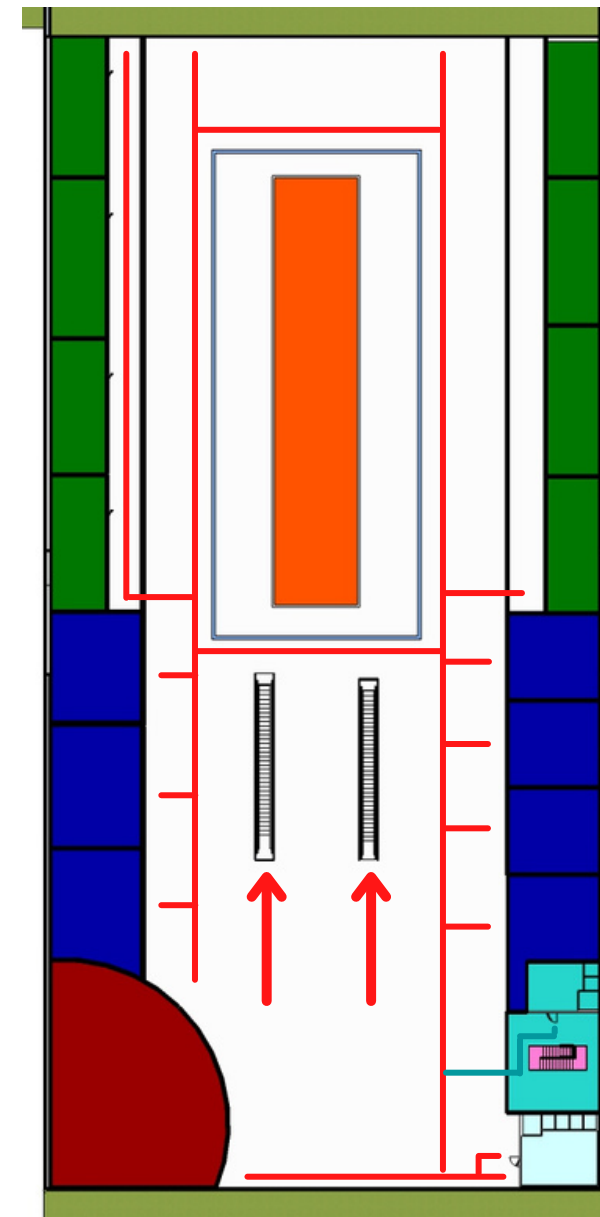
Piano terra

- hall d'ingresso
- biglietteria
- Infopoint
- Sale d'aspetto
- Mini luogo di culto
- Deposito bagagli
- Deposito oggetti smarriti
- Servizi per i viaggiatori
- Libreria/edicola
- Servizi personale
- Servizi ospiti
- Bar - area ristoro



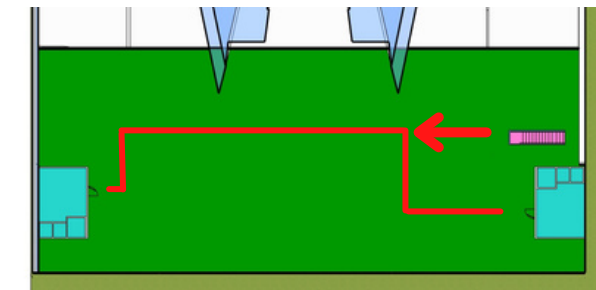
Primo piano

- biblioteca
- piccoli negozi
- uffici personale

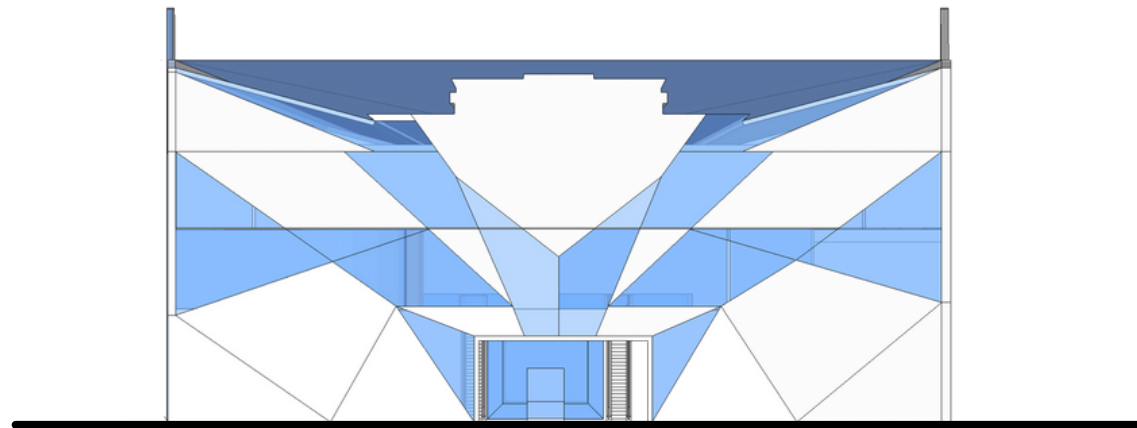


Secondo piano

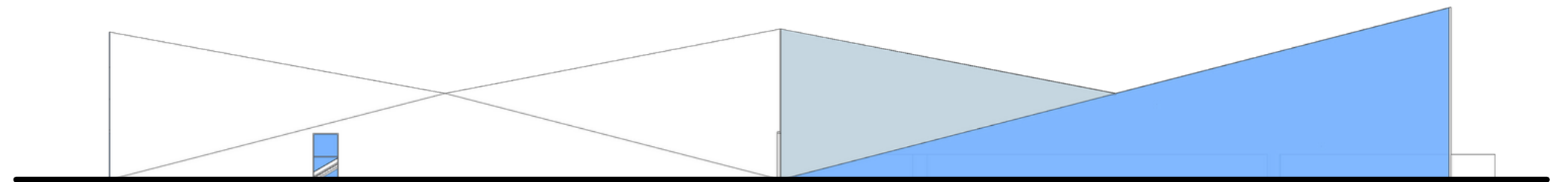
- piano tecnico
- servizi personale



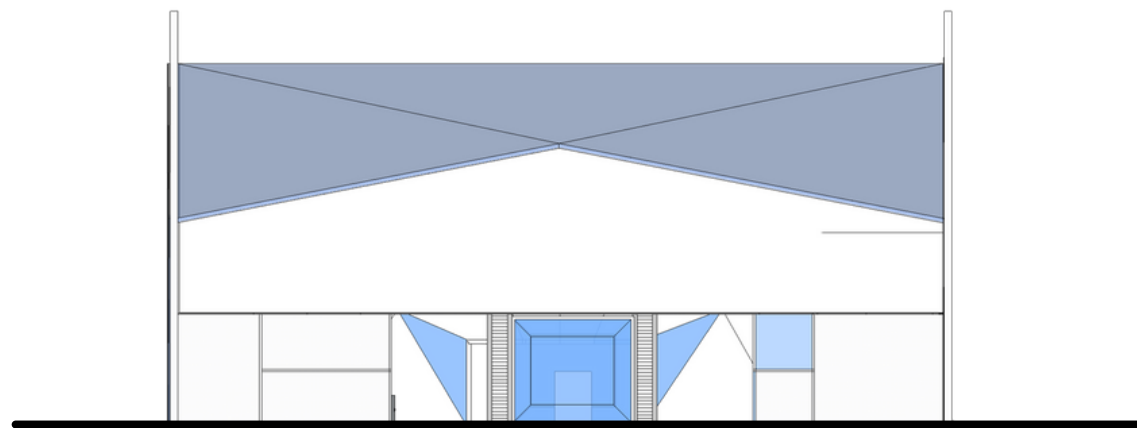
PROSPETTI



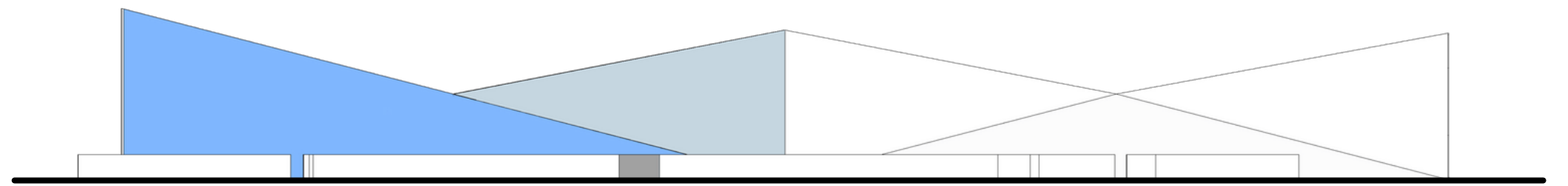
Prospetto nord



Prospetto ovest



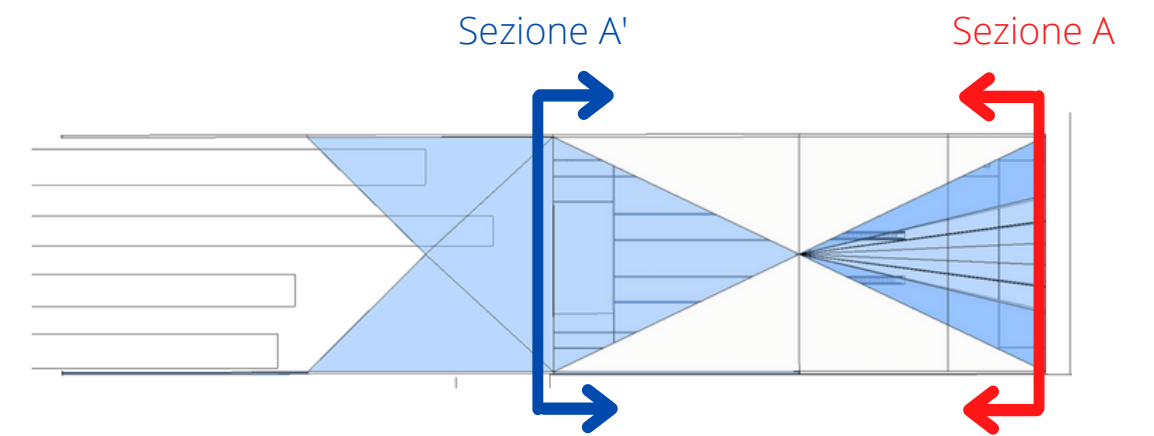
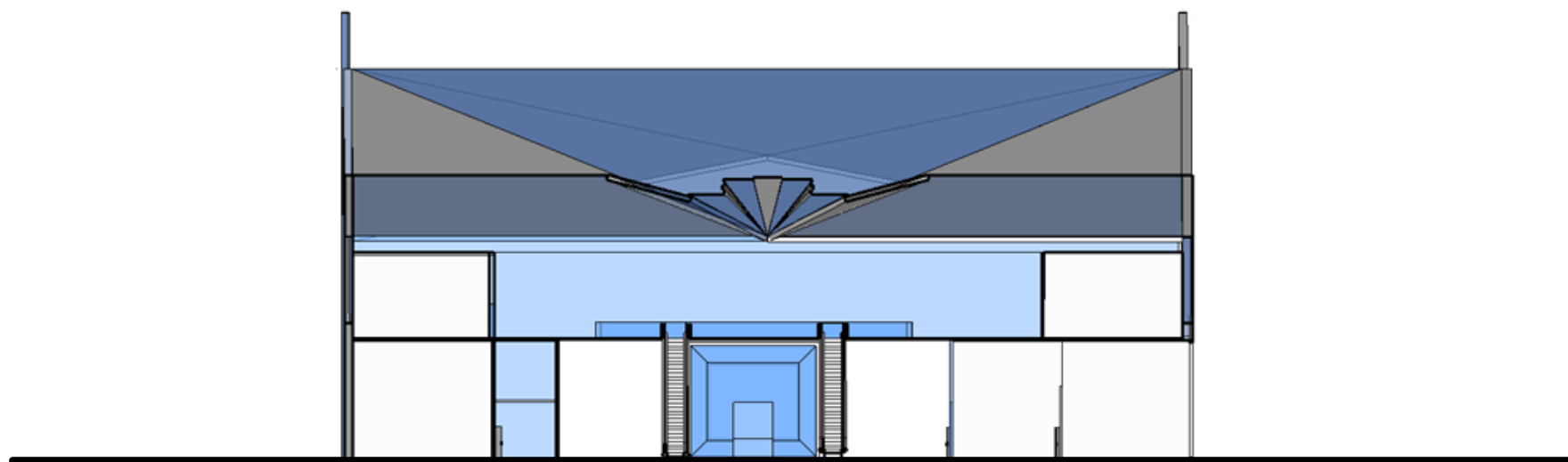
Prospetto sud



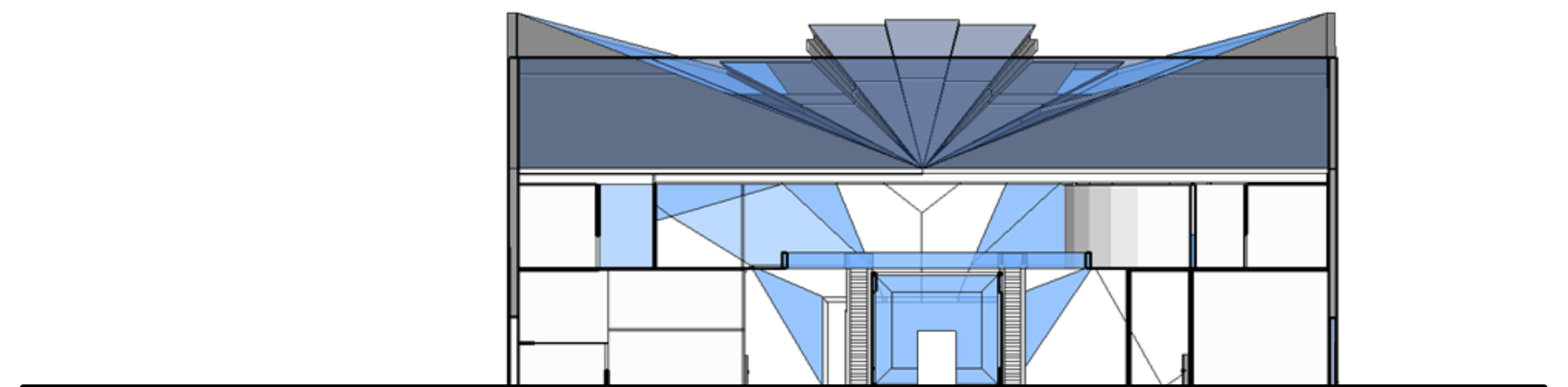
Prospetto est

SEZIONI A A'

Sezione A

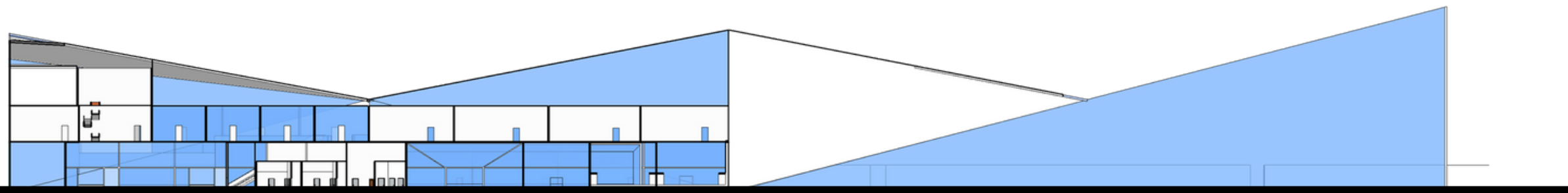
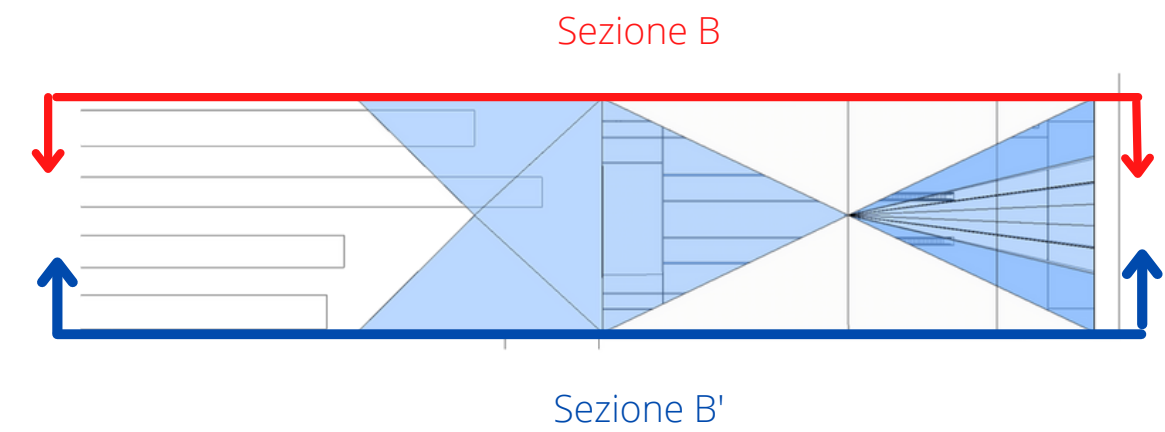


Sezione A'

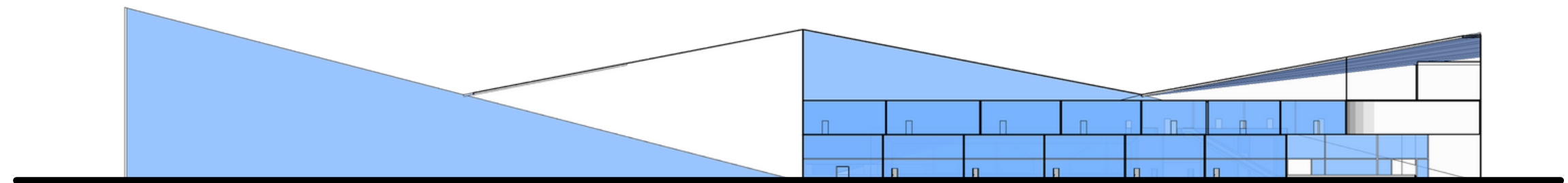


SEZIONI B B'

Sezione B



Sezione B'



PROSPETTIVE ESTERNI E INTERNI

